

# SD-VUE/52A USB KVM Extender USB 1.1 USB Tastatur / Maus Dual Head 2x VGA Video Audio RS232 K434-VA



## SD-VUE/52 Dual Video USB Mini Extender

All you need to extend two channels of high-resolution video, fully transparent USB, stereo audio, and serial port signals up to 50m over Category 5, 5e, 6 or Level 7 (CATx) cable.

### Features

- # Dual-head video support
- # High video resolution
- # Transparent USB 2.0 (low/full speed only)
- # Integral 4-port USB hub
- # Dual local video output
- # Emulated VESA DDC for each video channel
- # Bi-directional 16-bit stereo audio
- # Transparent serial port
- # Local unit powered directly by PC
- # Status indicator LEDs on RJ45 ports
- # Rack-mountable (3 units across 1U)
- # Surge-protected CATx interfaces

### Spezifikationen:

#### Video Compatibility and Resolution

- \* 1600 x 1200@75Hz over 50m
- \* Video Compatibility: VGA to UXGA, RGB

#### USB Compatibility

- \* Transparent USB 2.0 compliant
- \* (low/full speed only)

#### Serial Interface

- \* Max Baud Rate: 19.2k baud
- \* Serial Data Format: Transparent

#### Audio Interface

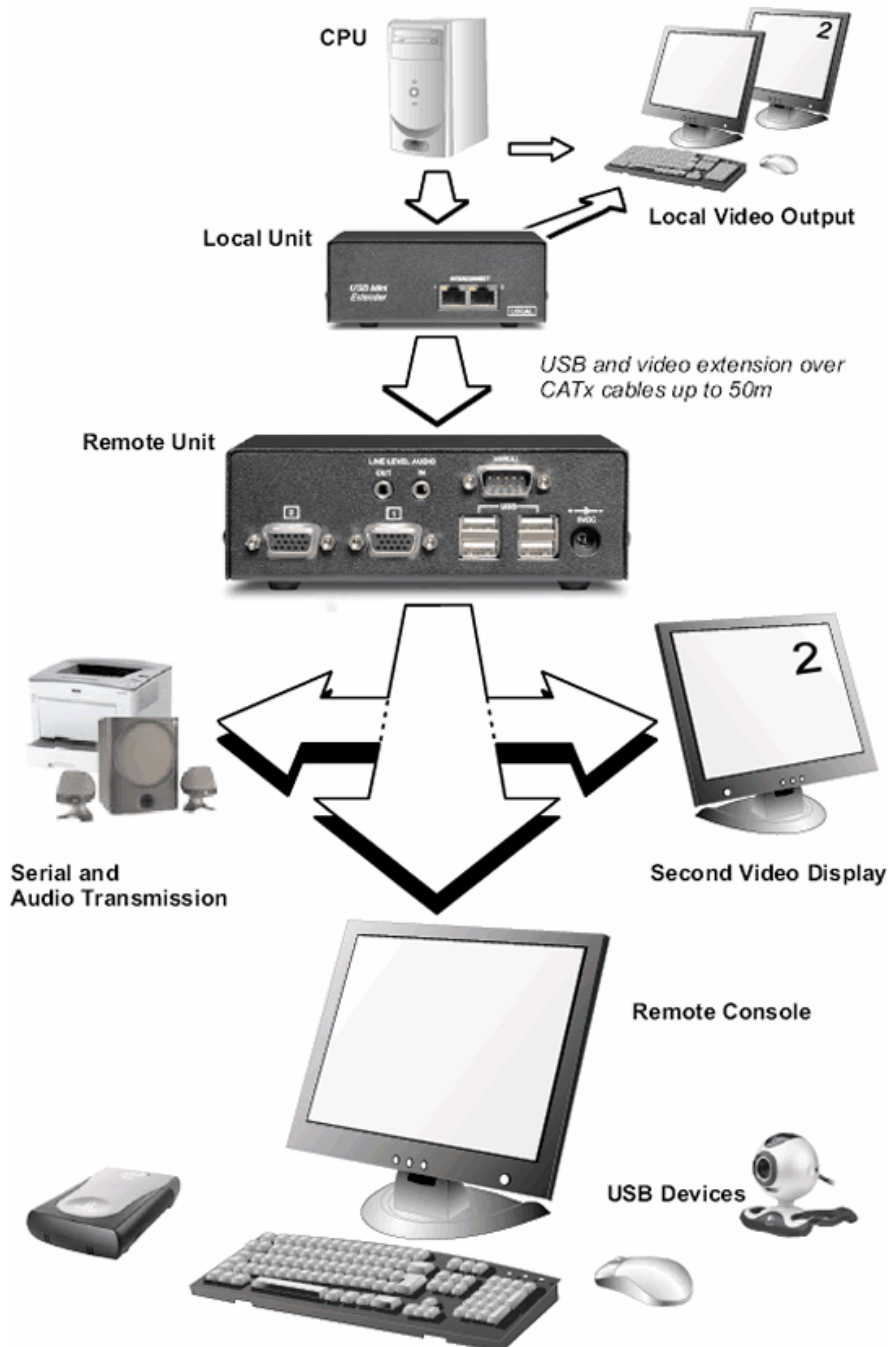
- \* Bi-directional stereo audio link
- \* Digitized virtually CD quality audio

Size and Shipping Weight

- \* Local Unit: 145 x 110 x 44mm (1U)
- \* Remote Unit: 138 x 98 x 44mm (1U)
- \* Shipping Weight: 2.0kg

Environmental

- \* Approvals: CE, FCC (Class A)



## Kontakt Daten - Anfrage:

Tel: 02822 33 33 990

E-Mail: [info@bellequip.at](mailto:info@bellequip.at)

Internet: [www.bellequip.at](http://www.bellequip.at)

## Lösungen für

<b>IT, EDV, Rechenzentren, Industrie, Automation, Telekommunikation, Leitstand, Rundfunk, Fernsehen, Werbung</b>		<b>Physikalischer Schutz – Datenschutz IT- Sicherheitsräume</b>
19 Zoll Einbaukonsolen 2 Port KVM Switches 4 Port KVM Switches 8 Port KVM Switches 16 Port KVM Switches KVM over IP Switches Matrix KVM over IP Switches KVM Switches DVI KVM Switches DVI Matrix Switches KVM Extender KVM over IP Extender USB Extender VGA Extender VGA + Audio Extender VGA + Audio + RS232 Extender DVI Extender DVI KVM Extender HDMI Extender DVI Splitter VGA Splitter VGA Video Switches Digital Signage Audio over IP Desktop over IP Line Interaktive USV Anlagen	1p / 1p Online USV Anlagen 3p / 1p Online USV Anlagen 3p / 3p Online USV Anlagen USV Anlagen USV Batterien USV Elektro Verteilung USV Service & Support USV Software USV Anlagen für Rechenzentren ATS Automatic Transfer Switches Konverter CATx Patchkabel LWL Patchkabel Netzwerkschränke Serverschränke Remote I/O Kontakte über IP Remote Power Management Rack Monitoring / Serverraum Überwachung Wireless Communication Mobiles Ethernet / Netzwerk GSM / GPRS / EDGE / UMTS / HSDPA Device Server Secure Console Server Serielle Server USB over IP	Brandfrühsterkennung Brandmelder Brandschutzpaneele Brandschutztüren Brandmeldezentralen Doppelboden / Doppelböden E-Installationstechnik Gaslöschanlagen Hochverfügbarkeitsraum / Hochverfügbarkeitsräume Kabeldurchführungen Klimageräte Leckagenwarnsysteme Netzersatzanlagen Präzisionsklimaschränke Sauerstoffreduzierung Serversafes Sicherheitsfolien Switchbox Videoüberwachung Zutrittssysteme