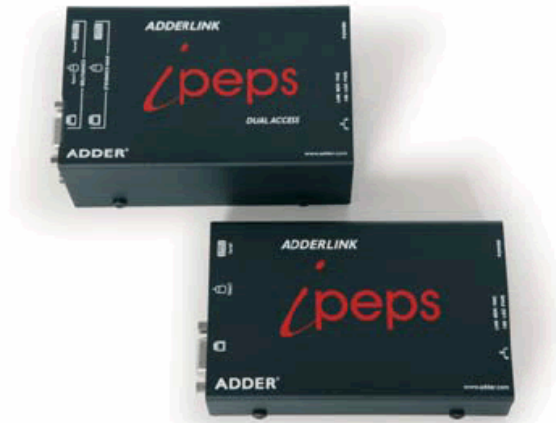


AdderLink IPEPS KVM via over IP Extender



The AdderLink ipeps product is part of the Adder's 'ipeps' (IP Engine per Server) concept that delivers a complete, secure, non-blocking approach to computer management.

A powerful and flexible KVM-via-IP product contained within a palm-sized unit, the AdderLink ipeps enables computer access from anywhere in the world, securely and remotely via the Internet or corporate network. The AdderLink ipeps uses Real VNC client software that is specifically designed for secure, high-performance KVM-via-IP applications.

Despite its small size, there is no compromise in the performance of the AdderLink ipeps. By using Adventiq Inside® on-chip KVM-via-IP technology, an extremely high performance solution can be contained in a compact unit.

For Enterprise KVM solutions the AdderLink ipeps provides a non-blocking global solution by providing each computer with a dedicated KVM-via-IP engine. This can be enhanced by using the ADDER.NET Enterprise Management Software that provides a centralized and secure user access management interface.

Where a KVM switch exists without KVM-via-IP functionality, the AdderLink ipeps is ideal for adding global management capabilities.

Increasing numbers of computers are being used in remote, stand-alone applications such as ATMs and digital signage play-out devices. The incredibly small size of the AdderLink ipeps makes it perfect for remote management and control of dispersed computers, meaning that many tasks that would have required an expensive site visit can now be done from anywhere.

Features

Independent operation

Gives full control even during boot up, BIOS level or computer crash states. The AdderLink ipeps will work even if the controlled devices are not operational.

High video performance

The AdderLink ipeps can use a standard web browser but for superior graphical performance, Real VNC is used. Free of the limitations of HTTPS, Real VNC greatly enhances video performance.

Highly secure

Employing enterprise-grade security (using AES 128-bit encryption and RSA 2048-bit public key authentication) as standard, the AdderLink ipeps is further enhanced by the use of Real VNC that allows for the creation of ciphered user communications.

User Management

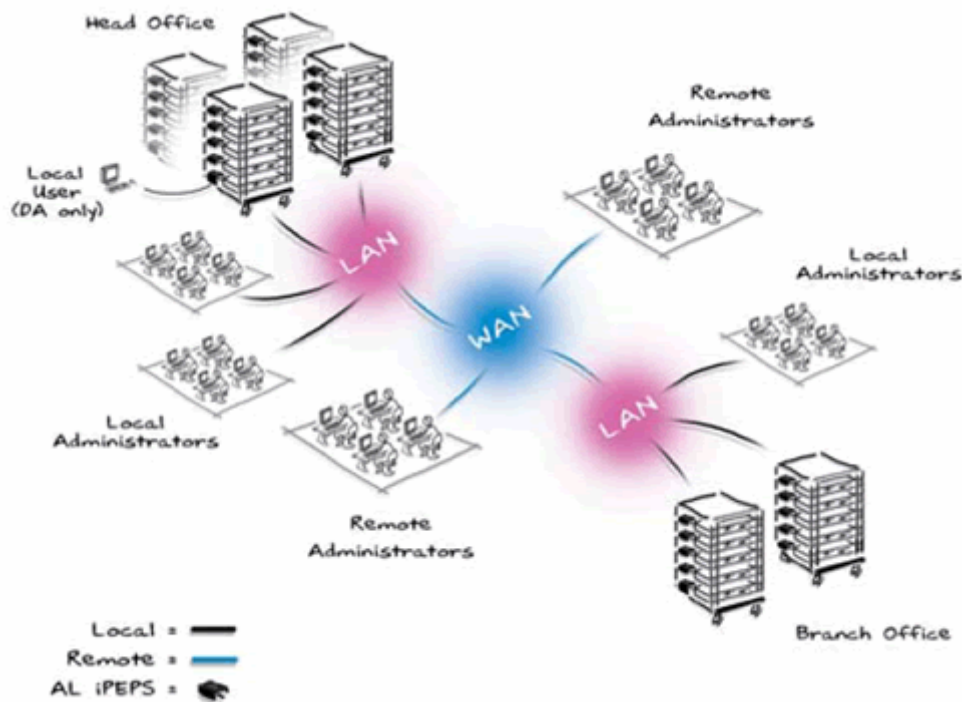
Knowing who does what and when is crucial for any remote access service. The AdderLink ipeps can create up to 16 user profiles with defined access rights.

Global user control and access management

Where many AdderLink ipeps devices are used it is important that user access to devices is both secure and quick. Optional ADDER.NET Enterprise Management Software allows for an unlimited number of devices to be seen and accessed at the click of a button. Unlimited user profiles are also supported with optional LDAP integration.

Virtual media support

To transfer files from remote users to controlled computers, the AdderLink ipeps has been engineered to act as a conduit through which data can be passed. Files can be transferred via IP on to the AdderLink ipeps and on to the target computer by means of a USB virtual media port.



Kontakt Daten - Anfrage:

Tel: 02822 33 33 990

E-Mail: info@bellequip.at

Internet: www.bellequip.at

Lösungen für

IT, EDV, Rechenzentren, Industrie, Automation, Telekommunikation, Leitstand, Rundfunk, Fernsehen, Werbung		Physikalischer Schutz – Datenschutz IT- Sicherheitsräume
19 Zoll Einbaukonsolen 2 Port KVM Switches 4 Port KVM Switches 8 Port KVM Switches 16 Port KVM Switches KVM over IP Switches Matrix KVM over IP Switches KVM Switches DVI KVM Switches DVI Matrix Switches KVM Extender KVM over IP Extender USB Extender VGA Extender VGA + Audio Extender VGA + Audio + RS232 Extender DVI Extender DVI KVM Extender HDMI Extender DVI Splitter VGA Splitter VGA Video Switches Digital Signage Audio over IP Desktop over IP Line Interaktive USV Anlagen	1p / 1p Online USV Anlagen 3p / 1p Online USV Anlagen 3p / 3p Online USV Anlagen USV Anlagen USV Batterien USV Elektro Verteilung USV Service & Support USV Software USV Anlagen für Rechenzentren ATS Automatic Transfer Switches Konverter CATx Patchkabel LWL Patchkabel Netzwerkschränke Serverschränke Remote I/O Kontakte über IP Remote Power Management Rack Monitoring / Serverraum Überwachung Wireless Communication Mobiles Ethernet / Netzwerk GSM / GPRS / EDGE / UMTS / HSDPA Device Server Secure Console Server Serielle Server USB over IP	Brandfrühsterkennung Brandmelder Brandschutzpaneele Brandschutztüren Brandmeldezentralen Doppelboden / Doppelböden E-Installationstechnik Gaslöschanlagen Hochverfügbarkeitsraum / Hochverfügbarkeitsräume Kabeldurchführungen Klimageräte Leckagenwarnsysteme Netzersatzanlagen Präzisionsklimaschränke Sauerstoffreduzierung Serversafes Sicherheitsfolien Switchbox Videoüberwachung Zutrittssysteme